

**This document provides information to install
eScan Web and Mail Filter for Windows**

**Installation Guide for
eScan Web and Mail Filter for Windows**

Copyright Notice:

eScan User Guide

The software described in this book is furnished under a license agreement and may be used only in accordance with the terms of the agreement.

Document Number : 2NESPIT/15.12.04

Copyright Notice

Copyright (C) 2004. All rights Reserved.

Portions (C) by Kaspersky Labs International Limited.

Any technical documentation that is made available by MicroWorld is the copyrighted work of MicroWorld and is owned by MicroWorld.

NO WARRANTY. The technical documentation is being delivered to you AS-IS and MicroWorld makes no warranty as to its accuracy or use. Any use of the technical documentation or the information contained therein is at the risk of the user.

Documentation may include technical or other inaccuracies or typographical errors. MicroWorld reserves the right to make change without prior notice.

No part of this publication may be copied without the express written permission of MicroWorld.

Trademarks.

MicroWorld, MicroWorld Logo, eScan, eScan logo, MWL, MailScan are trademarks of MicroWorld.

Windows is a registered trademark of Microsoft Corporation; Kaspersky is a registered trademark of Kaspersky Labs.

All product names referenced herein are trademarks or registered trademarks of their respective companies. MicroWorld Software Services Pvt. Ltd. (MicroWorld) disclaims proprietary interest in the marks and names of others. Although MicroWorld makes every effort to ensure that this information is accurate, MicroWorld will not be liable for any errors or omission of facts contained herein. MicroWorld Software Services Pvt. Ltd. reserves the right to modify specifications cited in this document without prior notice.

Companies, names and data used in examples herein are fictitious unless otherwise noted.

No part of this document may be reproduced or transmitted in any form or by any means, electronic or mechanical, for any purpose, without the express written permission of MicroWorld Software Services Pvt. Ltd.

Other product names mentioned in this manual may be trademarks or registered trademarks of their respective companies and are hereby acknowledged.

Technical Support: support@mwti.net

Sales: sales@mwti.net

Printed : MicroWorld

December, 2004

Table of Contents

Installation	4
Topics in Installation	4
Software and Hardware Requirements	4
Prerequisites for Installation	5
Installation Process	6
Support	10

Installation

This document provides information about the software and hardware requirements of your machine and provides step-by-step instructions to install eScan Web and Mail Filter for Windows.

Topics in Installation

This chapter provides details about the following topics:

- [Software and Hardware Requirements](#)
- [Prerequisites for Installation](#)
- [Installation Process](#)

Software and Hardware Requirements

Available for Platforms : Win 95/98/2000 Professional /NT Workstation /ME/XP Home/XP Pro

System Requirement :

For Windows 95/98 -

Pentium Processor

64 MB of Physical Ram

100 MB of free H/Disk Space

For Windows ME/NT Workstation /2000 Professional /XP -

Latest Service Pack installed

Pentium - II Processor and above

64-128 MB of Physical Ram

100 MB of free H/Disk Space.

Also supports AMD / Cyrix Processors

Prerequisites for Installation

Before installing the software ensure that the following are done:

- Uninstall previous versions of our products.
- Check for the largest drive/partition and install eScan on that drive/partition.
- Operating System Version, build and the Service Pack number. This information is available in the **Start > Programs > Administrative Tools (Common) > Windows NT Diagnostics** Select **Version** tab.

Note: For Windows NT, service pack 5 or above is required.

Needs Administrator Login to the PC.

- System should have Internet access to download Updates.

Installation Process

Installation is very simple, a point and click operation and done using the built-in install wizard. A user-friendly interface prompts you and presents a range of choices. Instructions are displayed in the screens that give you specific information. To abort installation, select “Cancel” in any of the screen. This section gives the step-by-step installation process.

- The software is sent to you in a CD. Load the CD in the player and open the CD ROM directory. A small movie that gives a preview of key features in eScan is run. You can click the "Skip Intro" link to directly go to installation.
- Installation is started automatically. Screen in Figure 1.1 is displayed. This is the start up screen for installing eScan.



Figure 1.1 Install – Opening Screen

Step 1

In Figure 1.1, select **Next** to begin installation. Screen in Figure 1.2 is displayed.

This screen shows the license agreement between you and MicroWorld. Read the instructions and select **Yes** if you accept the terms. Select **No** if you do not accept the terms in which case the installation process is aborted.

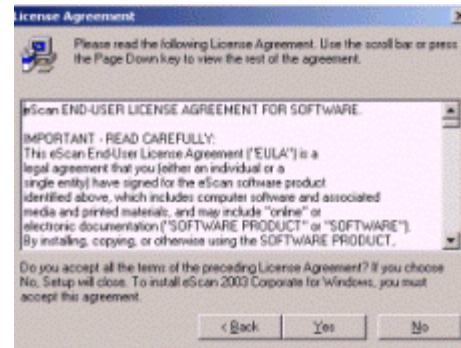


Figure 1.2 License Agreement

Step 2

If you select **Yes**, screen in Figure 1.3 is displayed.

You select the directory to install the application. The default path is displayed. To change the location, browse your PC and select the directory.

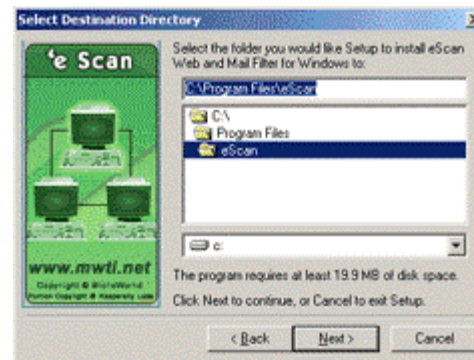


Figure 1.3 Select Destination Directory

Step 3

Select “**N**ext”. Screen in Figure 1.4 is displayed.

The application is ready to be installed. Select **I**nstall.

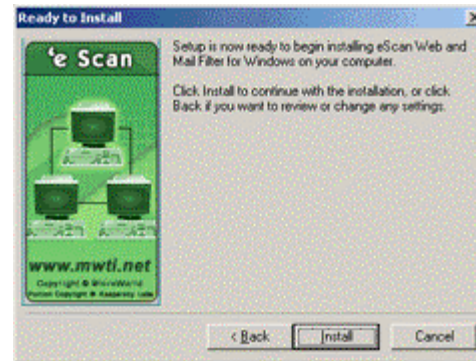


Figure 1.4 Begin Installation

Step 4

The software is copied and uploaded into the directory you have selected. A folder with the applications name is created.

A progress bar showing status of installation is displayed.

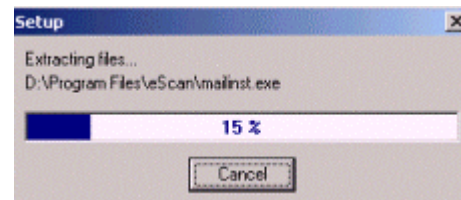


Figure 1.5 Installation progress bar

Step 5

Screen in Figure 1.6 is displayed. You need to enter the license key code to register the software. Select **A**pply and **O**K. If you are using a trial version or are unable to find the key, select the **T**rial button. You can purchase the License keys from MicroWorld.

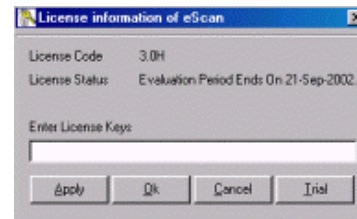


Figure 1.6 Enter License Key

Step 6

Click Finish to complete the installation

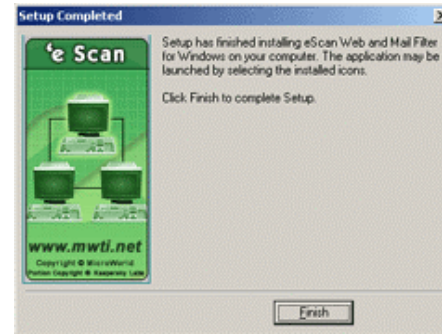


Figure 1.7 Enter License Key

Step 7

eScan is installed on your machine. The following icon is added to the task bar at the bottom of your screen.



If your Internet access is on, the latest vaccine updates are automatically downloaded and run. Progress bar shows the download progress.

- For details on running the software, refer to the on-line help in eScan. To access on-line help, click:
- Start > Programs > eScan for Windows > eScan Help.
- The on-line help is also integrated with eScan.

Uninstallation

To Uninstall eScan, click **Start > Programs > eScan for Windows > Uninstall eScan.**

Support

This section gives details to obtain support from MicroWorld. We offer 24x7 support to our customers through e-mail, telephone and Chat. For more information about our products please visit: www.mwti.net

Chat Support

- Chat with our support team at 'escanchat' using: AOL; MSN or Yahoo messenger service.

E-Mail support

We provide e-mail support. Drop us a line at support@mwti.net

Telephone Support

- We provide telephone support. Call us at +91 - 22 - 28265701 (5 lines) Fax: +91 - 22 - 28304750

Our offices

MicroWorld Technologies Inc.

33045 Hamilton Court East, Suite 105

Farmington Hills, MI 48334-3385

USA

Tel: (248) 848 9081/9084

Fax: (248) 848 9085

MicroWorld Software Services Pvt Ltd.

Plot No. 80, Road No. 15,

MIDC - Marol, Andheri (E),

Mumbai - 400 093, **India.**

Tel: (+91-22) 28265701 - 05

Fax: (+91-22) 2830 4750