

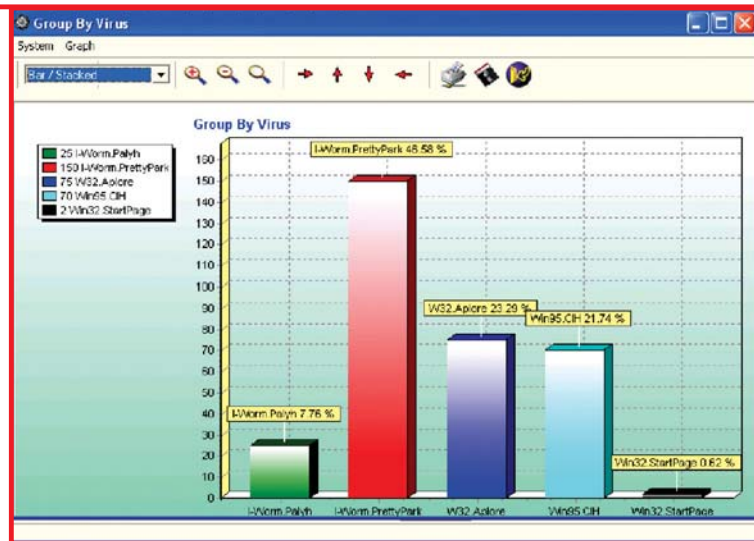
MicroWorld Technologies eScan Corporate Edition

RRP: 5 to 9 users: \$52 | 10 to 25 users: \$44 **Supplier:** MicroWorld Technologies **Internet:** www.mwta.com

I've been an eScan user for over a year now and it is by far one of the best antivirus applications I have used to date. The Corporate Edition, as opposed to the Internet Security Suite, is targeted at workstations and servers. What makes it different from traditional client antivirus software is that the Corporate Edition consists of two parts - the eScan Server, which can be installed on any machine on the network (such as a dedicated server or even a normal workstation), and the client, which will be installed on each individual workstation.

One of the most important aspects of eScan's antivirus software is the way in which it scans and prevents virus attacks. It does so by scanning through the WinSock (Windows Socket) layer. The WinSock layer can best be explained as an interface between your computer and the Internet. All incoming data, such as e-mails and Web pages, pass through the WinSock layer. Sadly, the Winsock layer is unable to distinguish between a clean or infected file and passes the data directly to the operating system where traditional antivirus scanners will only detect an infected file once the operating system acknowledges it. MicroWorld developed its own technology called MWL (MicroWorld Win-Sock Layer) which 'sits' on the WinSock layer and scans data, in real-time, before the operating system even gets a chance to look at it.

Once eServ is installed, you have the ability to remotely install the client software on any of the machines on your network. This process runs in the background of the client machine and the user will not be interrupted while the software is installed. The benefits of running eServ are plenty, but one of the most important features is the fact that only the server will download antivirus updates, which it will then redistribute to the workstations on the network. This has the obvious benefit that bandwidth is preserved as only one machine will download updates from the Internet. If, for some reason, a client machine fails to pull updates from the server, the server can force the client to pull the updates and install them.



Another useful feature of eServ is its ability to set up various security policies such as restricting access to Websites as well as spam, script, and e-mail blocking. These policies are first set up on the server and then distributed to the workstations. This will ensure that all the machines on your network conform to a uniform security policy.

You can also create multiple eScan servers on your network. This will ensure that if one server fails, the antivirus updates will be distributed via another server. These servers do not need to be dedicated servers as such, and can be normal workstations with the eServ software installed. eServ is not just your run of the mill updates deploying mechanism though. The eScan Management Console has a set of reporting tools built into it. You are able to run reports by date and IP address, and you can specify the report to show a list of the most common virus attacks as well as the most targeted PCs. There is also an interesting report that generates a graph as to what actions have been taken when a virus was detected (such as what percentage of viruses has been deleted, quarantined, or cleaned). eScan Corporate Edition is a great antivirus solution for small businesses and even large corporations. **SACM**

— Regardt van der Berg

SACM RATING



- Plus:** Server deploys antivirus updates
Workstations can be remotely installed
Reporting tools
- Minus:** Can be tricky to remotely install workstations

